

Table of Contents

Introduction 2

Internet Explorer Version 7-9 Display 2

Internet Explorer Version 7-9 Printed Output 3

Internet Explorer Version 6 Display 3

Internet Explorer Version 6 Printed Output..... 3

Mozilla Firefox Version 3 Display 5

Safari Version 3-4 Display 5

Safari Version 3-4 Printed Output 5

Opera Version 9 Display 5

Chrome Version 1-9 Display 6

Chrome Version 1-9 Printed Output..... 6

MSN Explorer Version 9 Display 6

MSN Explorer Version 9 Printed Output..... 6

Introduction

There are a wide variety of browsers and different versions of browsers available for use on the Internet and for viewing the New IronOaks Website. They have different characteristics and features and information especially as it related to visibility on some of the most popular are found below. The New IronOaks Website is designed to take advantage of the browser capability. Below is some information on the more popular browsers.

Note: Some of the graphics on this website will not print on a single page. Typically the first page will be printed with just the title. The second page will print as much of the graphic as possible and the remainder of the graphic will not print. There may be additional blank pages printed. As possible and practical this will be corrected.

Note: All browsers are periodically updated with new features and problems are fixed. Discuss this with your consultant before making any changes.

Disclaimer: There is a wide variety of hardware and software that control what you see on the display and what is printed. Typically there are display options to zoom the window, change the font size and change the overall appearance. Printed output parameters include scaling, margins, paper size, landscape mode and gray scale (no color). It is beyond the scope of

Internet Explorer Version 7-9 Display

For the buttons on the bottom right of the Internet Explorer screen, click the arrow next to the Change Zoom Level button to zoom the screen in or out for better viewing. You can also use the key combination ctrl + and ctrl -, that is press the ctrl key and then either the + or – key to zoom the display in the window. For better visibility maximize the window (the button with the squares in it in the upper right corner of the window).

You can also change the text size in the window. Click on View, Text Size and select the desired size from the menu. If you don't have a View button which then right click in a blank area at the top of the screen and select Menu Bar that appears in the window.

Clicking on Tools, Internet Options and Advanced will allow you to set some of the above options as shown below: The printed output is modified so that the links, borders and background color are not displayed in Print Preview or the printed output. Try printing one of the pages and compare it to the display to see the differences. If the

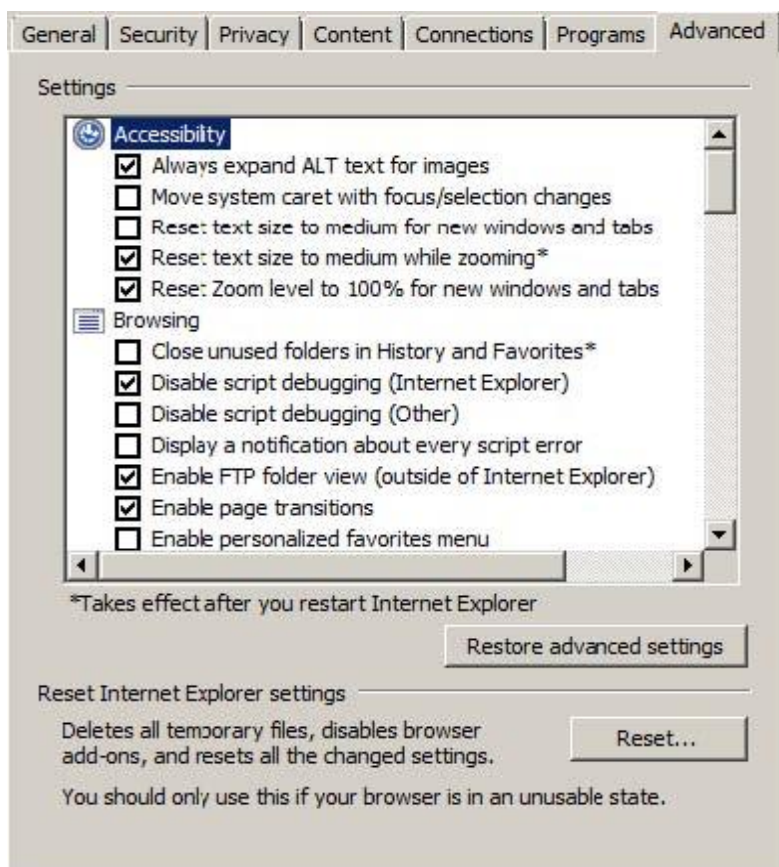
printed output is not correct try modifying some of the options in Print Preview. The Print Size option may help with images that are the wrong size. Also try changing from portrait to landscape orientation or adjust the page margins.

Internet Explorer Version 7-9 Printed Output

The printed output is modified so that the links, borders and background color are not displayed in Print Preview or the printed copy. Try printing one of the pages and compare it to the display to see the differences. If the printed output is not correct try modifying some of the options in Print Preview. Since graphics don't zoom it may be necessary to use the ctrl + and ctrl + keys to produce the desired printed results. Also try changing from portrait to landscape orientation.

Internet Explorer Version 6 Display

Click View, Zoom to change the window size. The window contents are



zoomed just like the window and will not show more or less text/graphics relative to the window. Maximum zoom may cause the content area (the white text/graphics area) to be moved below the left hand navigation area (the area with the links to various pages).

Internet Explorer Version 6 Printed Output

The printed output is modified so that the links, borders and

background color are not displayed in Print Preview or the printed output. Try printing one of the pages and compare it to the display to see the differences. If the printed output is not correct try modifying some of the options like the page margins. Also try changing from portrait to landscape

orientation.

Note: This browser contains numerous security issues and is no longer used to test the website.

Mozilla Firefox Version 3 Display

You can also use the key combination ctrl + and ctrl -, that is press the ctrl key and then either the + or – key to zoom the display in the window. For better visibility maximize the window (the button with the squares in it in the upper right corner of the window).

You can also change the text size in the window. Click on View, Zoom and Zoom Text Only. Now the ctrl + and ctrl -, key combination control the text size. For better visibility maximize the window (the button with the squares in it in the upper right corner of the window).

The printed output is modified so that the links, borders and background color are not displayed in Print Preview or the printed copy. Try printing one of the pages and compare it to the display to see the differences. If the printed output is not correct try modifying some of the options in Print Preview. The Scale option may help with images that are the wrong size. Also try changing from portrait to landscape orientation or adjusting the page margins to see different results.

Safari Version 3-4 Display

To change the text size click View and chose one of the Make options to change text size. The ctrl + and ctrl -, key combination control the text size. Graphics are not scaled. For better visibility maximize the window (the button with the squares in it in the upper right corner of the window).

Safari Version 3-4 Printed Output

The printed output is modified so that the links, borders and background color are not displayed in Print Preview or the printed copy. Try printing one of the pages and compare it to the display to see the differences. If the printed output is not correct try modifying some of the options in Print Preview. Since graphics don't zoom it may be necessary to use the ctrl + and ctrl - keys to produce the desired printed results. Also try changing from portrait to landscape orientation.

Opera Version 9 Display

To change the text size click View and Zoom and choose one of the options. You can also use the + or – keys to zoom by 10% for each click.

Opera Version 9 Printed Output

The printed output is modified so that the links, borders and background

color are not displayed in Print Preview or the printed copy. Try printing one of the pages and compare it to the display to see the differences. If the printed output is not correct try modifying some of the options in Print

Chrome Version 1-9 Display

The ctrl + and ctrl -, key combination control the text size. Graphics are not scaled. For better visibility maximize the window (the button with the squares in it in the upper right corner of the window).

Chrome Version 1-9 Printed Output

The printed output is modified so that the links, borders and background color are not displayed in the printed copy. Try printing one of the pages and compare it to the display to see the differences. If the printed output is not correct try modifying some of the print options. Since graphics don't zoom it may be necessary to use the ctrl + and ctrl - keys to produce the desired printed results. Landscape orientation is not available.

MSN Explorer Version 9 Display

To change the text size click View and chose one of the Text Size options. Medium Size seems to work best but you sometimes have to scroll a little bit to see the bottom of the display. Smaller Size works well and normally displays the entire page without scrolling but does have a little bit of line overlap. Smallest Size produces extreme line overlap and Larger or Largest Size greatly extends the page length without any added benefit. Graphics are not scaled. For better visibility maximize the window (the button with the squares in it in the upper right corner of the window).

MSN Explorer Version 9 Printed Output

The printed output is modified so that the links, borders and background color are not displayed in Print Preview or on the printed copy. Try printing one of the pages and compare it to the display to see the differences. If the printed output is not correct, try modifying some of the options in Print Preview. Print options of Portrait and Normal-Size Printing seems to work best. The Scale option may help with images that are the wrong size. Although Portrait works best, you can also try changing from portrait to landscape orientation or adjusting the page margins.

Note: This browser is no longer supported and is not used to test the website.